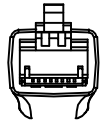


WRJ45ES END VIEW

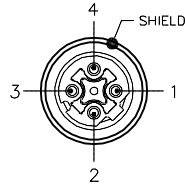


12345678

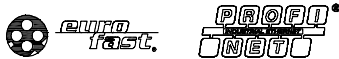
- PAIR [ 1 = YELLOW (+TD)
- 2 = ORANGE (-TD)
- PAIR [ 3 = WHITE (+RD)
- 4 = N/C
- 5 = N/C
- 6 = BLUE (-RD)
- 7 = N/C
- 8 = N/C



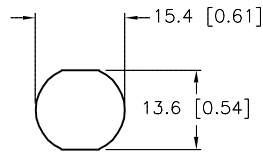
FEMALE END VIEW



- PAIR [ 1 = YELLOW (+TD)
- 2 = WHITE (+RD)
- PAIR [ 3 = ORANGE (-TD)
- 4 = BLUE (-RD)

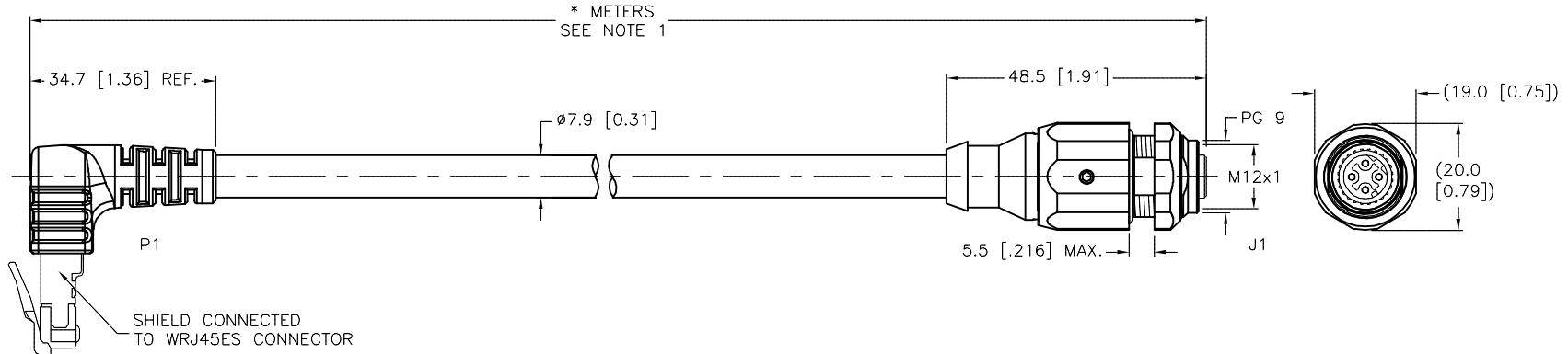


MOUNTING HOLE



SPECIFICATIONS

CONTACT CARRIER MATERIAL (P1)	POLYCARBONATE
MOLDED HEAD MATERIAL/COLOR (P1)	TPU/BLACK
CONTACT MATERIAL/PLATING (P1)	BRONZE/GOLD
CONTACT CARRIER MATERIAL (J1)	TPU
MOLDED HEAD MATERIAL/COLOR (J1)	TPU/BLACK
CONTACT MATERIAL/PLATING (J1)	BRASS/GOLD
COUPLING NUT MATERIAL/PLATING (J1)	BRASS/NICKEL
RATED CURRENT [A]	1.5 A
RATED VOLTAGE [V]	30 VAC/42 VDC
OUTER CABLE JACKET MATERIAL/COLOR	TPE/BRIGHT GREEN
CONDUCTOR INSULATION MATERIAL	HDPE
NUMBER OF CONDUCTORS [AWG]	4x22 AWG, STRANDED, CAT 5E
SHIELDING	ALUMINUM/POLYESTER FOIL, TINNED-COPPER BRAID
TEMPERATURE RANGE	-40°C to +80°C (-40°F to +176°F)
PROTECTION CLASS	MEETS IEC IP67 (RJ45/IP20)
MAX. PANEL THICKNESS	5.5mm [0.216"]
CONDUCTOR ARRANGEMENT	2x UNSHIELDED TWISTED PAIRS



CABLE LENGTH	TOLERANCE *
ALL LENGTHS	+ 4% (OR 50mm) OF LENGTH - 0% (OR 0mm) OF LENGTH WHICHEVER IS GREATER
STRIP LENGTH	TOLERANCE *
0-7mm	±0.5mm
8-29mm	±1.0mm
30-49mm	±2.0mm
50-69mm	±3.0mm
70-100mm	±4.0mm
OVER 100mm	±5.0mm

\* UNLESS OTHERWISE SPECIFIED

SOURCE DRAWING - FOR REFERENCE ONLY

NOTES:

1."\*" INDICATES CABLE LENGTH IN METERS. CONTACT TURCK TO ORDER SPECIFIC LENGTHS.

RELATED DOCUMENTS	3RD ANGLE PROJECTION	THIS DRAWING IS CONFIDENTIAL AND THE PROPERTY OF TURCK INC. USE OF THIS DOCUMENT WITHOUT WRITTEN PERMISSION IS PROHIBITED.		3000 CAMPUS DRIVE MINNEAPOLIS, MN 55441 1-800-544-7769 (763) 553-7300 (763) 553-0708 fax www.turck.us	
1.		DRFT	ER	DATE	11/02/18
2.		APVD	D.L.	SCALE	1=1.3
3.	ALL DIMENSIONS DISPLAYED ON THIS DRAWING ARE FOR REFERENCE ONLY  CONTACT TURCK FOR MORE INFORMATION	UNIT OF MEASUREMENT		DESCRIPTION	
4.		MILLIMETER [ INCH ]		WRJ45ES FKSDDED 423-*M	
MATERIAL	CONTACT TURCK FOR MORE INFORMATION	DO NOT SCALE THIS DRAWING		IDENTIFICATION NO.	REV
FINISH		FILE: 777042430			A
A DRAWING RELEASE		ER	11/08/18	SHEET 1 OF 1	
REV	DESCRIPTION	BY	DATE	ECO NO.	