

HC-STA-B16PT-BWD-LT-M25-ELCAL - Connector set



1416349

<https://www.phoenixcontact.com/us/products/1416349>

Please be informed that the data shown in this PDF document is generated from our online catalog. Please find the complete data in the user documentation. Our general terms of use for downloads are valid.

Connector set, number of positions: 16, connection method: Push-in connection, connection cross section: AWG 26- 14



Commercial data

| | |
|--------------------------------------|---------------------|
| Item number | 1416349 |
| Packing unit | 1 pc |
| Minimum order quantity | 1 pc |
| Sales key | BF63 |
| Product key | BF7AFX |
| Catalog page | Page 647 (C-2-2019) |
| GTIN | 4055626071213 |
| Weight per piece (including packing) | 579.5 g |
| Weight per piece (excluding packing) | 566.3 g |
| Customs tariff number | 85366990 |
| Country of origin | CN |

HC-STA-B16PT-BWD-LT-M25-ELCAL - Connector set



1416349

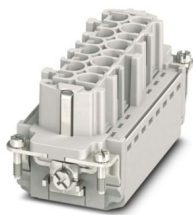
<https://www.phoenixcontact.com/us/products/1416349>

Set consists of

HC-B16-I-PT-F - Contact insert

1407731

<https://www.phoenixcontact.com/us/products/1407731>

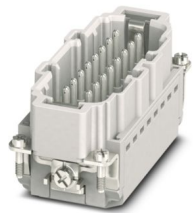


Contact insert, number of positions: 16+PE, size: B16, number of connections per position: 1, Socket, Push-in connection, 500 V, 16 A, 0.14 mm² ... 2.5 mm², application: Power

HC-B16-I-PT-M - Contact insert

1407732

<https://www.phoenixcontact.com/us/products/1407732>



Contact insert, number of positions: 16+PE, size: B16, number of connections per position: 1, Pin, Push-in connection, 500 V, 16 A, 0.14 mm² ... 2.5 mm², application: Power

HC-STA-B16PT-BWD-LT-M25-ELCAL - Connector set



1416349

<https://www.phoenixcontact.com/us/products/1416349>

HC-STA-B16-BWD-ELC-AL - Housing

1411327

<https://www.phoenixcontact.com/us/products/1411327>



HEAVYCON B16 panel mounting base, with double locking latch, with flat gasket, salt-water-resistant aluminum, conductive profile gasket

HC-STA-B16-HLFD-1TTM25-EL-AL - Housing

1412721

<https://www.phoenixcontact.com/us/products/1412721>



Sleeve housing B16, for double locking latch, material: Die-cast aluminum, salt water resistant, cable outlets: 1, straight, 1x M25, height: 60 mm, cable gland: none, Standard

HC-STA-B16PT-BWD-LT-M25-ELCAL - Connector set



1416349

<https://www.phoenixcontact.com/us/products/1416349>

G-INS-M25-M68N-NNES-S - Cable gland

1411165

<https://www.phoenixcontact.com/us/products/1411165>



Cable gland, material for screw connection: Brass, nickel-plated, external cable diameter 11 mm ... 17 mm, shielding: no, connecting thread: M25 x 1.5, color: silver, with O-ring

1416349

<https://www.phoenixcontact.com/us/products/1416349>

Technical data

Product properties

| | |
|----------------------|------------------|
| Product type | Connector set |
| Series | HC-B |
| Application | Standard |
| Type | B16 |
| Number of positions | 16 |
| Connection profile | 16+PE |
| No. of cable outlets | 1 |
| Housing type | Complete housing |
| Seal present | yes |
| Protective cover | no |

Insulation characteristics

| | |
|----------------------|-----|
| Overvoltage category | III |
| Degree of pollution | 3 |

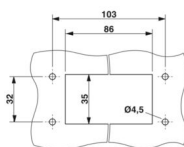
Electrical properties

| | |
|-----------------------|-------|
| Rated voltage (III/3) | 500 V |
| Rated surge voltage | 6 kV |
| Rated current | 16 A |

Connection data

| | |
|------------------------------|--|
| Connection method | Push-in connection |
| Connection technology | Push-in connection |
| Conductor cross section | 0.14 mm ² ... 2.5 mm ² (with ferrule) 0.14 mm ² ... 2.5 mm ² (with ferrule) |
| Connection cross section AWG | 26 ... 14 |
| Stripping length | 8 mm ... 10 mm |

Dimensions

| | |
|---------------------------------|--|
| Dimensional drawing |  |
| Width | 53 mm |
| Height | 90.5 mm |
| Length | 114 mm |
| Drill hole distance, horizontal | 103 mm |
| Drill hole distance, vertical | 32 mm |
| Hole diameter | 4.5 mm |

HC-STA-B16PT-BWD-LT-M25-ELCAL - Connector set



1416349

<https://www.phoenixcontact.com/us/products/1416349>

Installation dimensions

| | |
|-------------------------------|-------|
| Width of the assembly cutout | 35 mm |
| Length of the assembly cutout | 86 mm |

Material specifications

| | |
|--|--|
| Material Housing | Die-cast aluminum, saltwater-resistant |
| Flammability rating according to UL 94 | V0 |
| Seal material Profile gasket | NBR |
| Seal material Flat gasket | NBR |
| Contact material | Copper alloy |
| Contact surface material | Ag |
| Contact carrier material | PC |
| Locking latch material | PA |
| Impact strength | IK09 |

Cable/line

| | |
|-----------------------------|--------------------------------|
| External cable diameter () | 11 mm ... 17 mm |
| | 14 mm ... 17 mm (for UL 514 B) |

Mechanical properties

Mechanical data

| | |
|-----------------------------|-------|
| Locking type | Latch |
| Insertion/withdrawal cycles | ≥ 500 |

Environmental and real-life conditions

Ambient conditions

| | |
|---------------------------------|-------------------|
| Degree of protection | IP66 |
| | IP67 |
| Enclosure rating (NEMA) | 4 (UL 50e) |
| | 4X (UL 50e) |
| | 12 (UL 50e) |
| Impact strength | IK09 |
| Ambient temperature (operation) | -40 °C ... 100 °C |

Mounting

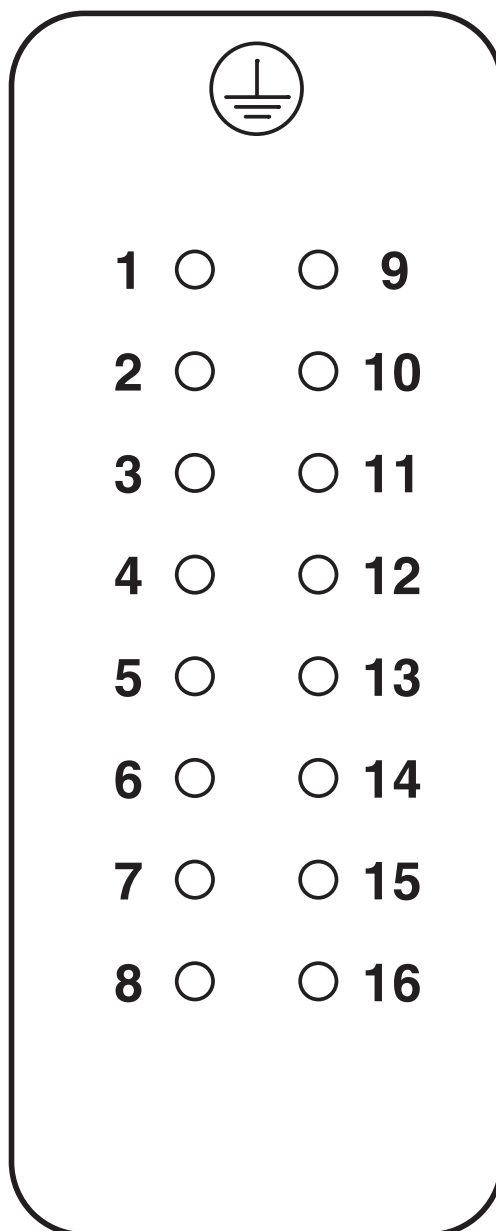
| | |
|-----------------------|---|
| Mounting type | Screw mounting |
| Assembly instructions | Coding also using the CP-HC (1686478) coding profiles. HC-B6.. / HC-B10..for two coding profiles. HC-B16../ HC-B24..for four coding profiles. |
| | Connectors may only be operated when there is no load/the power is switched off. Can be used for solid wires and stranded wires with ferrule. |

1416349

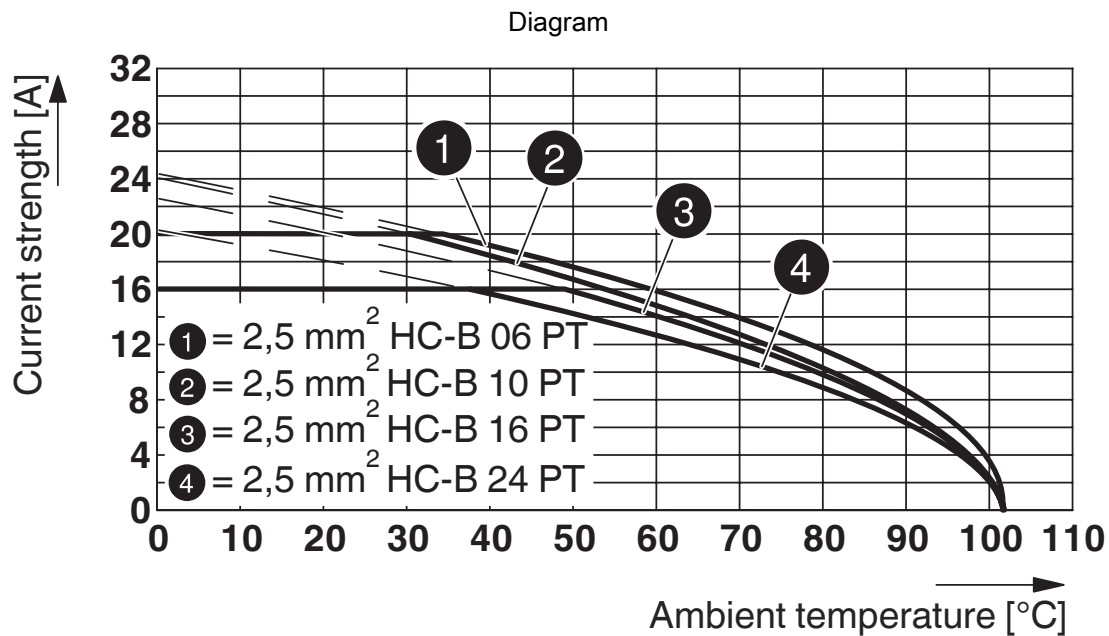
<https://www.phoenixcontact.com/us/products/1416349>

Drawings

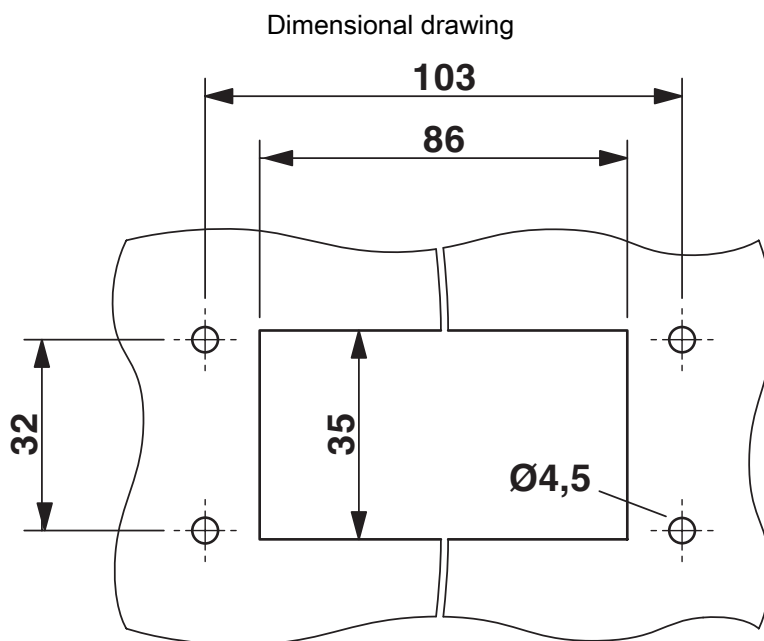
Schematic diagram



Pin assignment, connection side, socket



Derating diagram

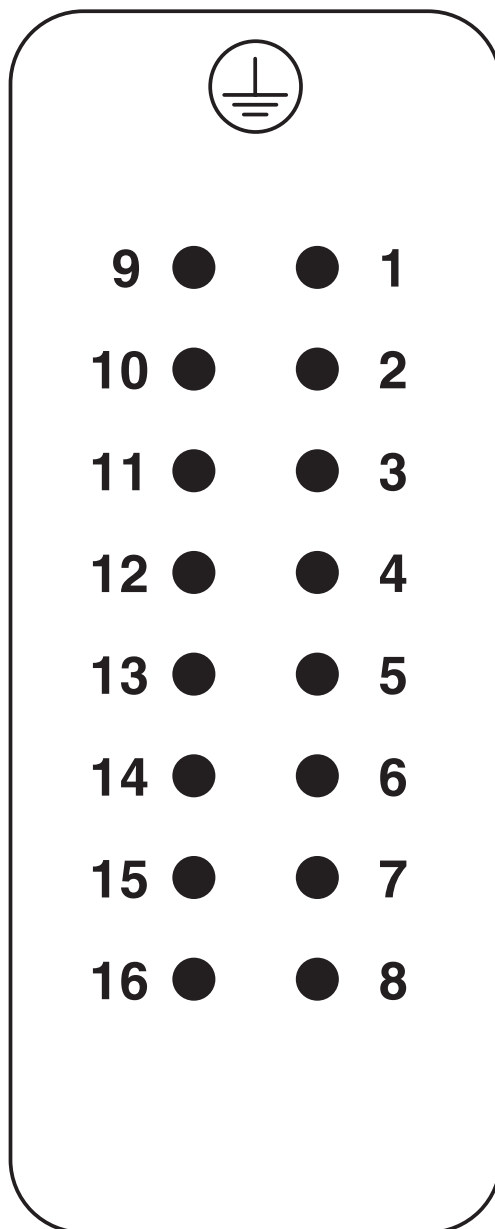


Mounting cutout

1416349

<https://www.phoenixcontact.com/us/products/1416349>

Schematic diagram

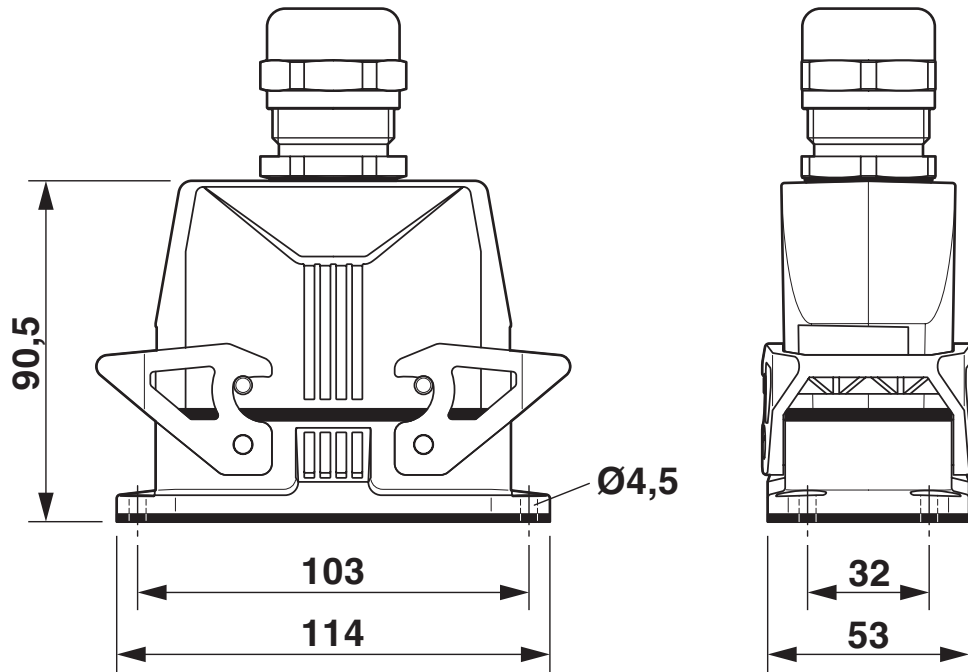


Pin assignment, connection side, pin

1416349

<https://www.phoenixcontact.com/us/products/1416349>

Dimensional drawing



Dimensional drawing

1416349

<https://www.phoenixcontact.com/us/products/1416349>

Approvals

🔗 To download certificates, visit the product detail page: <https://www.phoenixcontact.com/us/products/1416349>

DNV

Approval ID: TAE000037S

ERC

EAC

Approval ID: RU C-DE.AI30.B.01102

ERC

EAC

Approval ID: RU C-DE.BL08.B.00511

1416349

<https://www.phoenixcontact.com/us/products/1416349>

Classifications

ECLASS

| | |
|-------------|----------|
| ECLASS-11.0 | 27440101 |
| ECLASS-12.0 | 27440113 |
| ECLASS-13.0 | 27440113 |

ETIM

| | |
|----------|----------|
| ETIM 9.0 | EC002636 |
|----------|----------|

UNSPSC

| | |
|-------------|----------|
| UNSPSC 21.0 | 39121400 |
|-------------|----------|

1416349

<https://www.phoenixcontact.com/us/products/1416349>

Environmental product compliance

EU RoHS

| | |
|---|------|
| Fulfills EU RoHS substance requirements | Yes |
| Exemption | 6(c) |

China RoHS

| | |
|--|---|
| Environment friendly use period (EFUP) | EFUP-50 |
| | An article-related China RoHS declaration table can be found in the download area for the respective article under "Manufacturer declaration". For all articles with EFUP-E, no China RoHS declaration table issued and required. |

EU REACH SVHC

| | |
|-------------------------------------|--------------------------------------|
| REACH candidate substance (CAS No.) | Lead(CAS: 7439-92-1) |
| SCIP | bb6246f1-ade9-42d3-a3fa-5b5274c357a7 |

Phoenix Contact 2024 © - all rights reserved
<https://www.phoenixcontact.com>

Phoenix Contact USA
586 Fulling Mill Road
Middletown, PA 17057, United States
(+717) 944-1300
info@phoenixcon.com