

# HC-STA-A10PT-BWSC-LS-M20-ELCAL - Connector set



1424458

<https://www.phoenixcontact.com/us/products/1424458>

Please be informed that the data shown in this PDF document is generated from our online catalog. Please find the complete data in the user documentation. Our general terms of use for downloads are valid.



Connector set, number of positions: 10, connection method: Push-in connection, connection cross section: AWG 26- 14

## Commercial data

Item number	1424458
Packing unit	1 pc
Minimum order quantity	1 pc
Sales key	BF63
Product key	BF7AFX
GTIN	4055626372877
Weight per piece (including packing)	336 g
Weight per piece (excluding packing)	336 g
Customs tariff number	85366990
Country of origin	CN

# HC-STA-A10PT-BWSC-LS-M20-ELCAL - Connector set



1424458

<https://www.phoenixcontact.com/us/products/1424458>

## Set consists of

### HC-A10-I-PT-M - Contact insert

1585359

<https://www.phoenixcontact.com/us/products/1585359>



Contact insert, number of positions: 10+PE, size: D15, number of connections per position: 1, Pin, Push-in connection, 250 V, 16 A, 0.14 mm<sup>2</sup> ... 2.5 mm<sup>2</sup>

---

### HC-A10-I-PT-F - Contact insert

1585362

<https://www.phoenixcontact.com/us/products/1585362>



Contact insert, number of positions: 10+PE, size: D15, number of connections per position: 1, Socket, Push-in connection, 250 V, 16 A, 0.14 mm<sup>2</sup> ... 2.5 mm<sup>2</sup>

# HC-STA-A10PT-BWSC-LS-M20-ELCAL - Connector set



1424458

<https://www.phoenixcontact.com/us/products/1424458>

## HC-STA-D15-BWSC-EL-AL - Housing

1424363

<https://www.phoenixcontact.com/us/products/1424363>



Panel mounting base D15, with single locking latch, material: Die-cast aluminum, salt water resistant, protective cover material: PC, height: 26 mm, cable gland: none, protective cover: yes, Standard

---

## HC-STA-D15-HLFS-1STM20-ELC-AL - Housing

1424345

<https://www.phoenixcontact.com/us/products/1424345>



Sleeve housing D15, for single locking latch, material: Die-cast aluminum, salt water resistant, cable outlets: 1, lateral, 1x M20, height: 56 mm, cable gland: none, Standard

# HC-STA-A10PT-BWSC-LS-M20-ELCAL - Connector set



1424458

<https://www.phoenixcontact.com/us/products/1424458>

## G-INS-M20-S68N-NNES-S - Cable gland

1411163

<https://www.phoenixcontact.com/us/products/1411163>



Cable gland, material for screw connection: Brass, nickel-plated, application: Standard, external cable diameter 6 mm ... 12 mm, shielding: no, connecting thread: M20 x 1.5, color: silver, with O-ring

# HC-STA-A10PT-BWSC-LS-M20-ELCAL - Connector set



1424458

<https://www.phoenixcontact.com/us/products/1424458>

## Technical data

### Product properties

Product type	Connector set
Housing type	Complete housing
Application	Standard
Type	D15
Number of positions	10
No. of cable outlets	1
Protective cover	yes

### Insulation characteristics

Overvoltage category	III
Degree of pollution	3

### Electrical properties

Rated voltage (III/3)	250 V
Rated surge voltage	4 kV
Rated current	16 A

### Connection data

Connection method	Push-in connection
Connection technology	Push-in connection
Conductor cross section	0.14 mm <sup>2</sup> ... 2.5 mm <sup>2</sup> (applies to stranded conductors with ferrules) 0.14 mm <sup>2</sup> ... 2.5 mm <sup>2</sup> (applies to stranded conductors with ferrules)
Connection cross section AWG	26 ... 14

### Dimensions

#### Installation dimensions

Width of the assembly cutout	24 mm
Length of the assembly cutout	58 mm

### Material specifications

Material Housing	Die-cast aluminum, saltwater-resistant
Flammability rating according to UL 94	V0
Contact material	Copper alloy
Contact surface material	Ag
Contact carrier material	PC
Locking latch material	PA
Impact strength	IK08

### Cable/line

# HC-STA-A10PT-BWSC-LS-M20-ELCAL - Connector set



1424458

<https://www.phoenixcontact.com/us/products/1424458>

External cable diameter	6 mm ... 12 mm
	10 mm ... 12 mm (for UL 514 B)

## Environmental and real-life conditions

### Ambient conditions

Degree of protection	IP66
	IP67
Impact strength	IK08
Ambient temperature (operation)	-40 °C ... 100 °C

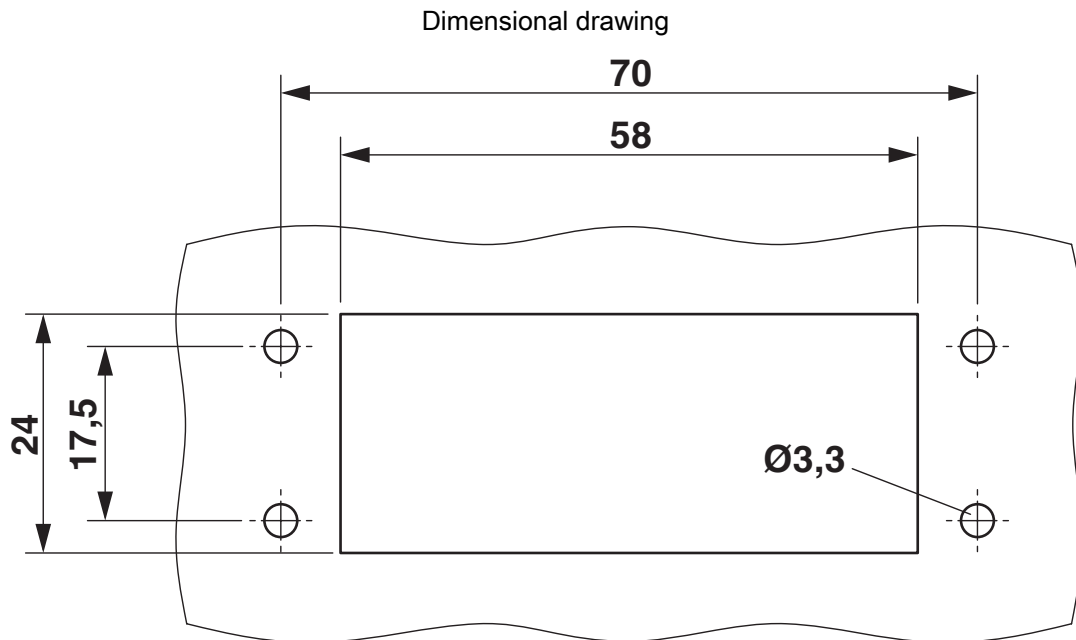
# HC-STA-A10PT-BWSC-LS-M20-ELCAL - Connector set



1424458

<https://www.phoenixcontact.com/us/products/1424458>

## Drawings



Mounting cutout

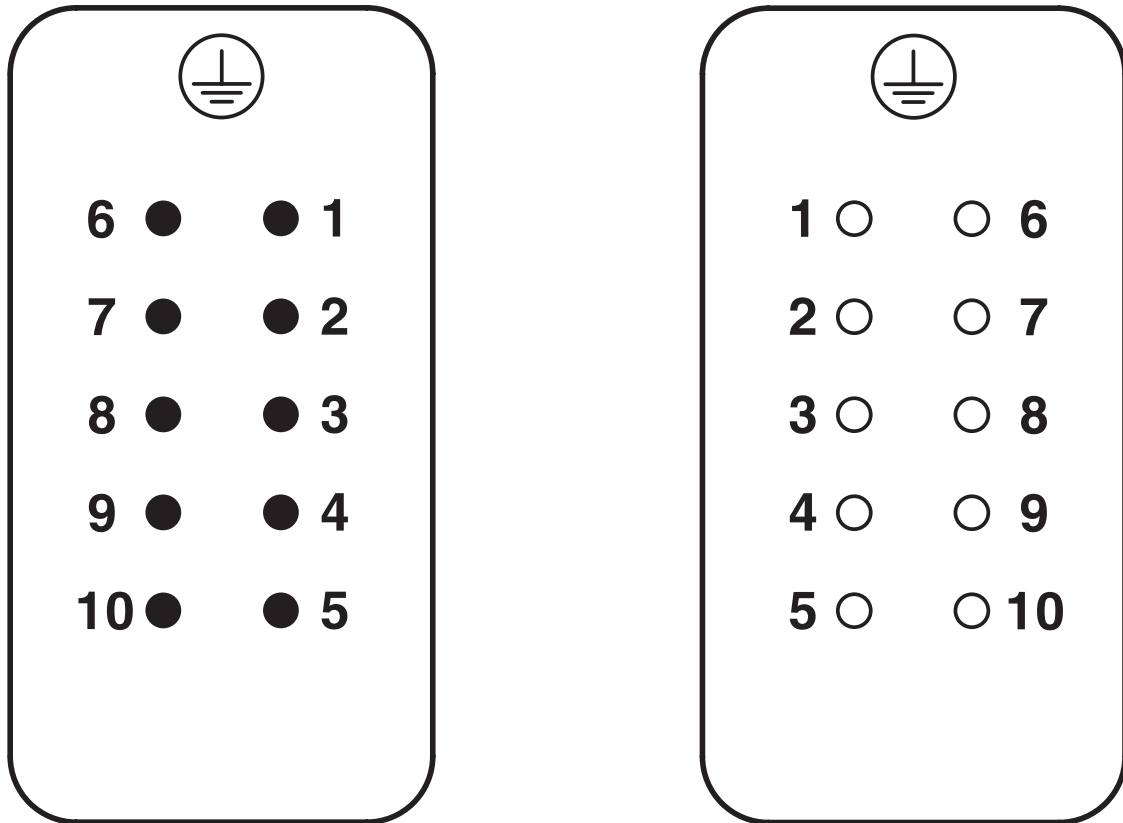
# HC-STA-A10PT-BWSC-LS-M20-ELCAL - Connector set



1424458

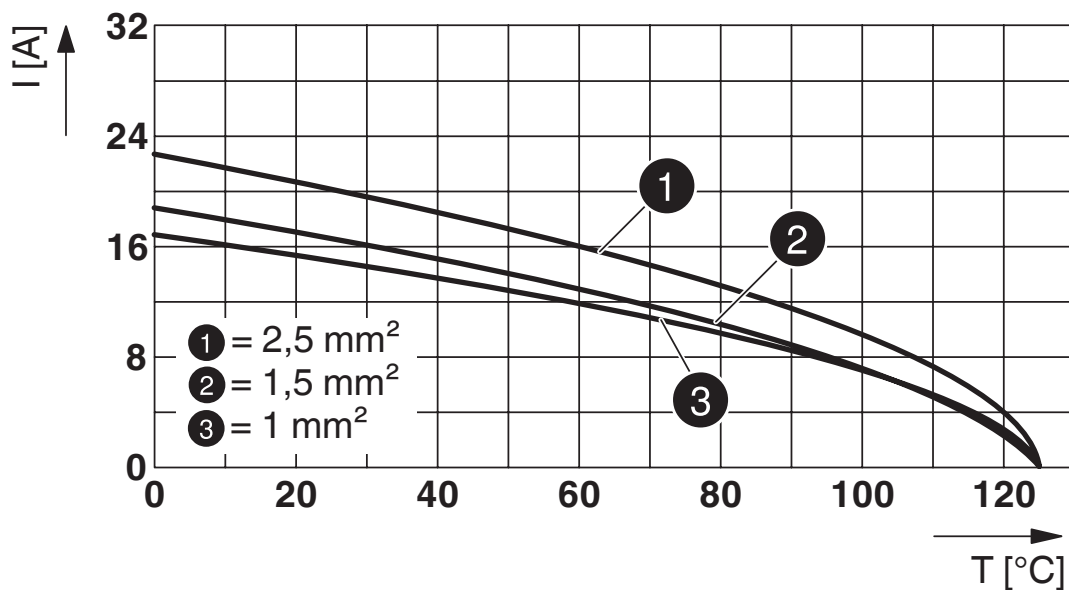
<https://www.phoenixcontact.com/us/products/1424458>

Schematic diagram



Pin assignment, connection side, pin left, socket right

Diagram



Derating diagram



# HC-STA-A10PT-BWSC-LS-M20-ELCAL - Connector set



1424458

<https://www.phoenixcontact.com/us/products/1424458>

## Approvals

🔗 To download certificates, visit the product detail page: <https://www.phoenixcontact.com/us/products/1424458>

**DNV**

Approval ID: TAE000037S



**EAC**

Approval ID: RU C-DE.BL08.B.00511

# HC-STA-A10PT-BWSC-LS-M20-ELCAL - Connector set



1424458

<https://www.phoenixcontact.com/us/products/1424458>

## Classifications

### ECLASS

ECLASS-11.0	27440101
ECLASS-12.0	27440113
ECLASS-13.0	27440113

### ETIM

ETIM 9.0	EC002636
----------	----------

### UNSPSC

UNSPSC 21.0	39121400
-------------	----------

# HC-STA-A10PT-BWSC-LS-M20-ELCAL - Connector set



1424458

<https://www.phoenixcontact.com/us/products/1424458>

## Environmental product compliance

### EU RoHS

Fulfills EU RoHS substance requirements	Yes
Exemption	6(c)

### China RoHS

Environment friendly use period (EFUP)	EFUP-50
	An article-related China RoHS declaration table can be found in the download area for the respective article under "Manufacturer declaration". For all articles with EFUP-E, no China RoHS declaration table issued and required.

### EU REACH SVHC

REACH candidate substance (CAS No.)	Lead(CAS: 7439-92-1)
SCIP	d27a7f50-5501-4f34-8f0e-21a0f94191c1

Phoenix Contact 2024 © - all rights reserved  
<https://www.phoenixcontact.com>

Phoenix Contact USA  
586 Fulling Mill Road  
Middletown, PA 17057, United States  
(+717) 944-1300  
[info@phoenixcon.com](mailto:info@phoenixcon.com)