

## EPIC® H-BE 32 Screw termination

The proven standard inserts for easy assembly  
 Standard inserts with screw, crimp cage clamp and Push-In termination  
 The EPIC® H-BE series is suitable for applications that require a reliable connection when working with high voltages and currents



Industrial machinery and plant engineering



Robust



Temperature-resistant

### Info

Proven screw for easy installation  
 Screw, crimp, cage clamp and Push-In version - freely combinable

### Application range

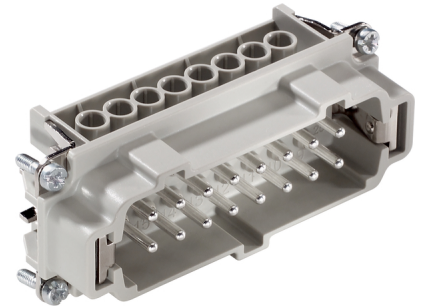
Mechanical engineering  
 Light & sound technology  
 Plastics industry

### Technical Data

Stripping length (mm):	8
Rated voltage (V):	IEC: 500 V UL: 600 V CSA: 600 V
Rated impulse voltage:	6 kV
Rated current (A):	IEC: 16 A UL: 16 A CSA: 16 A
Contact resistance:	< 2 mOhm
Contacts:	Copper alloy, hard silver-plated
Number of contacts:	16 + PE
Termination methods:	Screw termination: 0.5 - 2.5 mm <sup>2</sup>
Cycle of mechanical operation:	100
Temperature range:	-40°C to +100°C, short-term up to +125°C
VDE-tested:	Certified production control: VDE-REG. no.: B437 UL-tested: UL File Number: E75770
Degree of soiling:	3

### Note

Photographs are not to scale and do not represent detailed images of the respective products.





## EPIC® H-BE 32 Screw termination

Part number	Article description	Contact type	Wire protection	Number of operating contacts	Pieces / PU
H-BE 32 screw termination					
10202000	EPIC® H-BE 16 SS 17-32	male	yes	17 - 32	5
H-BE 16 screw termination					
10194000	EPIC® H-BE 16 SS	male	yes	1 -16	5
10195000	EPIC® H-BE 16 BS	female	yes	1 -16	5
10203000	EPIC® H-BE 16 BS 17-32	female	yes	17 - 32	5
10194100	EPIC® H-BE 16 SS	male		1 -16	5
10195100	EPIC® H-BE 16 BS	female		1 -16	5
10202100	EPIC® H-BE 16 SS 17-32	male		17 - 32	5
10203100	EPIC® H-BE 16 BS 17-32	female		17 - 32	5

**EPIC® H-BE 32 Screw termination**

