

Basic features

Approval/Conformity	CE WEEE
---------------------	------------

Display/Operation

Function indicator (Pin 2)	no/no
Function indicator (Pin 4)	no/no
Power indicator	no/no

Electrical connection

Connection 1	M12x1-Female, straight, 4-pin, D-coded
Connection 2	M12x1-Female, straight, 4-pin, D-coded
Connector 01, version	straight
Connector 02, version	straight
Number of pins	4/4

Remarks

Enclosure rating per IEC 60529, only in screwed state with the associated mating piece.

Electrical data

Operating voltage U_b	60 VDC / 60 VAC
Rated current (40 °C)	4.0 A

Environmental conditions

Ambient temperature	-25...80 °C
IP rating	IP67/IP67

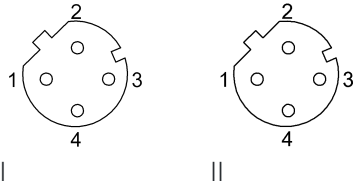
Material

Material contact carrier	PA 6
Material contacts	Brass
Material cover nut	Brass
Material grip	Brass

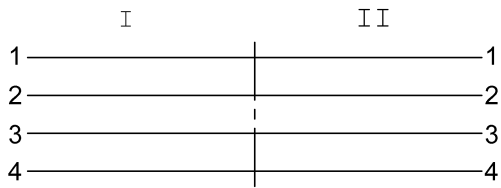
Mechanical data

Mounting part	M16x1.5
---------------	---------

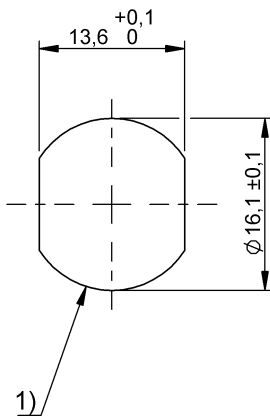
Connector Drawings



Wiring Diagrams



Help Views



1) Recommended cutout