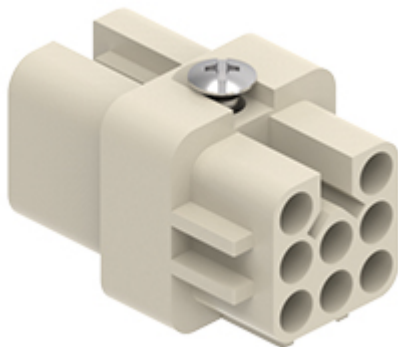



Part number
CDF 07



Female insert, CD series, crimp connection, 7 poles + PE, 10 A 250 V 4 kV 3, size "21.21"

Product description	
Product type	Insert
Series	CD
Connection type	Crimp connection
Gender	Female
N. of poles	7 poles + 
Size	Size "21.21"
Specification	Standard & HNM (High Number of Matings)

Technical data	
Current	10 A
Voltage	250 V
Rated impulse withstand voltage	4 kV
Pollution degree	3
Rated voltage according to UL/CSA	600 V
IP degree of protection	IP20 without enclosure, IP44/IP66/IP67/IP68/IP69 with enclosure

Further technical details	
Characteristics according to EN 61984	10A 250V 4kV 3; 10A 230/400V 4kV 2
Mating cycles	≥ 500
Insulation resistance	≥ 10 GΩ
Contact resistance	≤ 3 mΩ
Weight	9,00 g
Operating temperature range (min, max)	-40 °C ... +125 °C
Conductors stripping length	8 mm (6 mm for 2,5 mm ²)
UL 94 flammability rating	V-0
Tightening torque for PE connection	M4: 1,2 Nm, 10,6 lb.in (Ph2 or 1,0x5,5mm)
Tightening torque for fixing screws	M3: 0,5 Nm; 4,4 lb.in (Ph1 or 0,8 x 5,5 mm)

Material properties	
Main material	Polycarbonate (PC)
Colour	RAL 7032 grey
RoHs conformity	Compliant with exemption 6(c): copper alloy containing up to 4% lead by weight
China RoHs - EFUP	50
REACH SVHC substances	Yes Lead
SCIP number	5a97d67d-dd49-45fe-94c0-411f951ef5ee

Approvals / Standards	
Reference standard	EN 61984:2009-06
Certifications	CSAc, CQC, DNV, BV, EAC
UL	ECBT2
cUL	ECBT8

General ordering information	
EAN13 code	8015747014274
eCl@ss 8.1	27440205
ETIM 7.0	EC000438

Packaging Information	
Packaging length	210,00 mm
Packaging height	200,00 mm
Packaging width	130,00 mm
Packaging weight	2,09 kg
Packaging volume	5,46 dm ³
Packaging description	Carton box
Packaging quantity	200 Pcs
Packaging EAN code	8015747103169
Sub-packaging length	197,00 mm
Sub-packaging height	35,00 mm
Sub-packaging width	113,00 mm
Sub-packaging weight	0,42 kg
Sub-packaging volume	0,78 dm ³
Sub-packaging description	Carton tray
Sub-packaging quantity	40 Pcs
Sub-packaging EAN barcode	8015747103176

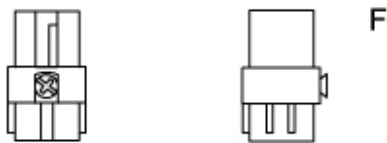
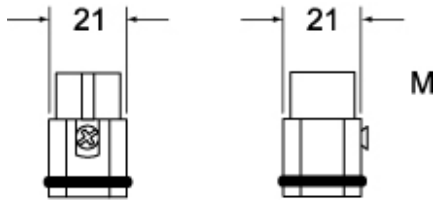
Part number

CDF 07



Catalogue drawings

CDM 07 (N)

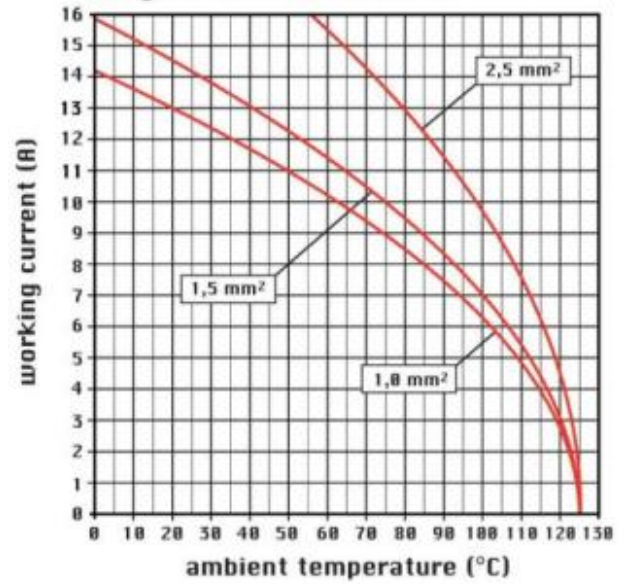


CDF 07 (N)



Catalogue drawings

diagram CD 07 and 08 poles



Notes