

# Thermal overload relays, Class 10A

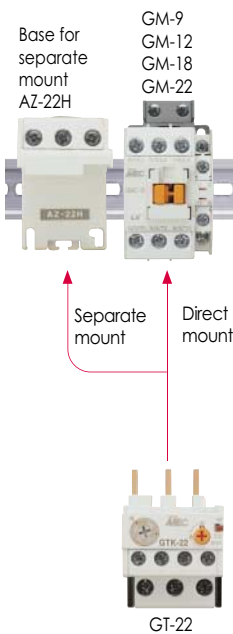
22A

## Description

- Direct mount on the GM-9, 12, 18, 22 contactors (9, 12, 18, 22A frames)
- DIN rail or screw mountable with the optional base AZ-22H
- Small physical size : 44 mm wide
- 1NO+1NC trip contacts
- Trip class 10A
- Differential current/Phase failure protection : GTK types
- Non-differential GTH types are available for the economic solution
- Ambient compensated -5 to 40°C
- Manual/Automatic reset
- Trip free design
- Bimetallic style



GT-22



GT-22

## Catalog No.

Setting ranges(A)	Differential type	Non-differential type	
	3-heater	3-heater	2-heater
0.1 - 0.16	GTK-22 · 0.14	GTH-22/3 · 0.14	GTH-22 · 0.14
0.16 - 0.25	GTK-22 · 0.21	GTH-22/3 · 0.21	GTH-22 · 0.21
0.25 - 0.4	GTK-22 · 0.33	GTH-22/3 · 0.33	GTH-22 · 0.33
0.4 - 0.63	GTK-22 · 0.52	GTH-22/3 · 0.52	GTH-22 · 0.52
0.63 - 1	GTK-22 · 0.82	GTH-22/3 · 0.82	GTH-22 · 0.82
1 - 1.6	GTK-22 · 1.3	GTH-22/3 · 1.3	GTH-22 · 1.3
1.6 - 2.5	GTK-22 · 2.1	GTH-22/3 · 2.1	GTH-22 · 2.1
2.5 - 4	GTK-22 · 3.3	GTH-22/3 · 3.3	GTH-22 · 3.3
4 - 6	GTK-22 · 5	GTH-22/3 · 5	GTH-22 · 5
5 - 8	GTK-22 · 6.5	GTH-22/3 · 6.5	GTH-22 · 6.5
6 - 9	GTK-22 · 7.5	GTH-22/3 · 7.5	GTH-22 · 7.5
7 - 10	GTK-22 · 8.5	GTH-22/3 · 8.5	GTH-22 · 8.5
9 - 13	GTK-22 · 11	GTH-22/3 · 11	GTH-22 · 11
12 - 18	GTK-22 · 15	GTH-22/3 · 15	GTH-22 · 15
16 - 22	GTK-22 · 19	GTH-22/3 · 19	GTH-22 · 19

## Connection

<b>Main</b>	Screw(M4) clamp terminal
<b>(Load)</b>	Cable capacity : 1.25~5.5mm <sup>2</sup> / ϕ 1.6~2.6
<b>Auxiliary</b>	Screw(M3.5) clamp terminal

## Ordering information

Specify catalog number

## For more information

- Technical specification ➔ page 123~158
- Drawings ➔ page 175
- Contactors ➔ page 28
- Starters ➔ page 51
- Separate mounting unit ➔ page 171
- Electronic overload relay ➔ page 100
- Operating curves ➔ page 153

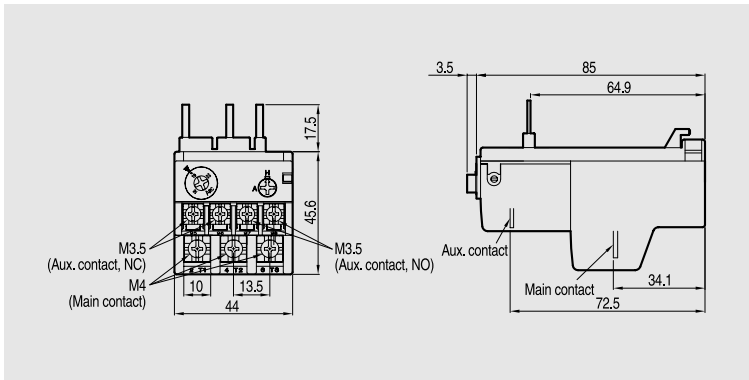
**Certificate**

CE, ULcUL, Lloyd,  
CCC(China)

# Thermal overload relays (Class 10A)



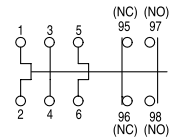
- GTH-22
- GTK-22
- GTH-22/3



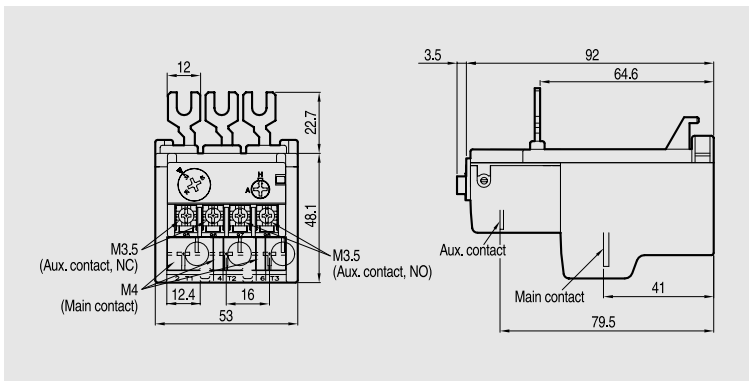
0.11kg

## Diagrams

GTH-22, 40, 85  
(2 heater types)

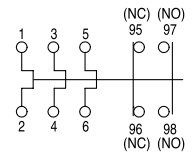


- GTH-40
- GTK-40
- GTH-40/3

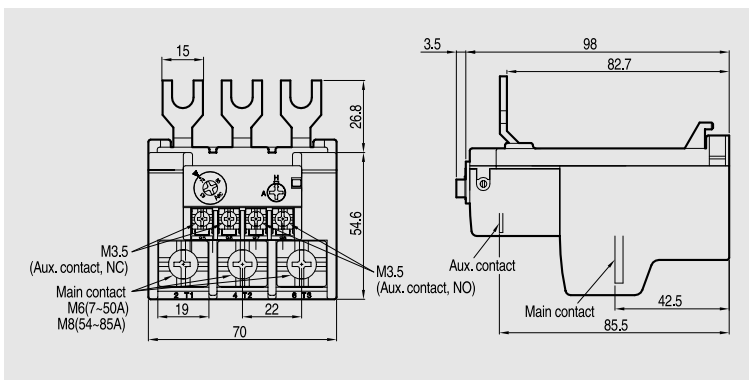


0.17kg

GTH-22/3, 40/3, 85/3  
GTK-22, 40, 85  
(3 heater types)



- GTH-85
- GTK-85
- GTH-85/3



0.3kg